



# Ventilation Systems

Titon: The indoor air quality experts



# Ventilation Systems as recommended by Approved Document F

Natural ventilation with background ventilators & intermittent extract fans



Titon Ultimate® (Intermittent option) and Trickle Vents

Continuous mechanical extract ventilation - Centralised MEV (Option)



CME Q Plus range of Continuous Mechanical Extract Ventilation Fans and Trickle Vents

Continuous mechanical extract ventilation - Decentralised dMEV (Option)



Titon Ultimate® dMEV and Trickle Vents

Mechanical ventilation with heat recovery (MVHR)



HRV Q Plus range of Mechanical Ventilation Fans



## HRV1.35 Q Plus



**Dimensions**  
600x430x285

**Specific Fan Power:**  
down to 0.65 W/l/s

**Heat exchanger:**  
up to 88%

**Airflow:**  
60l/s @ 100 Pa

**Ports:**  
125mm

**Weight:**  
16kg

**Finish:**  
White Paint

**Handing:**  
Left/Right on site

**Warranty:**  
3 years

**Product Codes:**  
TP408HMB - HMB  
TP408HMB\_LT - HMB Eco  
auralite® Indicator

TP418B2 - B2  
TP418B2\_T - B2 aura-t™  
control

## HRV1.6 Q Plus



**Dimensions**  
600x505x353mm

**Specific Fan Power:**  
down to 0.49 W/l/s

**Heat exchanger:**  
up to 89%

**Airflow:**  
100l/s @ 100 Pa

**Ports:**  
125mm

**Weight:**  
22kg

**Finish:**  
White Paint

**Handing:**  
Left/Right on site

**Warranty:**  
3 years

**Product Codes:**  
TP409HMB - HMB  
TP409HMB\_LT - HMB Eco  
auralite® Indicator

TP419B2 - B2  
TP419B2\_T - B2 aura-t™  
control

## HRV4 Q Plus



**Dimensions**  
600x602x477

**Specific Fan Power:**  
down to 0.38 W/l/s

**Heat exchanger:**  
up to 91%

**Airflow:**  
118l/s @ 100 Pa

**Ports:**  
150mm

**Weight:**  
28.5kg

**Finish:**  
White Paint

**Handing:**  
Left/Right on site

**Warranty:**  
3 years

**Product Codes:**  
TP421HMB - HMB  
TP421HMB\_LT - HMB Eco  
auralite® Indicator

TP431B2 - B2  
TP431B2\_T - B2 aura-t™  
control

## HRV4.25 Q Plus



**Dimensions**  
600x602x477

**Specific Fan Power:**  
down to 0.43 W/l/s

**Heat exchanger:**  
up to 91%

**Airflow:**  
158l/s @ 100 Pa

**Ports:**  
150mm

**Weight:**  
28.5kg

**Finish:**  
White Paint

**Handing:**  
Left/Right on site

**Warranty:**  
3 years

**Product Codes:**  
TP423HMB - HMB  
TP423HMB\_LT - HMB Eco  
auralite® Indicator

TP433B2 - B2  
TP433B2\_T - B2 aura-t™  
control

## Continuing Professional Development (CPD)

- Part F 2022 - Domestic Buildings Compliance
- Part O 2021 - Understanding Overheating
- Part B 2024 - Introduction of metal air bricks for building applications into external walls
- (CIBSE CPD/The CPD Certification Service)



Book a CPD



## HRV Cool Plus

### Dimensions

Wall mounted:  
704x518x1550

Floor mounted:  
704x518x2002

Floor washing  
machine mounted:  
704x518x2296

**Cooling:**  
3.0 kW total cooling

**Refrigerant:**  
R32 reliable and proven  
Global Warming.  
Potential (GWP) ~675

**Weight:**  
Wall mounted 100kg,  
Floor mounted 108kg

**Finish:**  
White Paint

**Handing:**  
Left/Right on site

**Warranty:**  
2 years

### Product Codes:

**TP759 -**  
Wall mounted unit

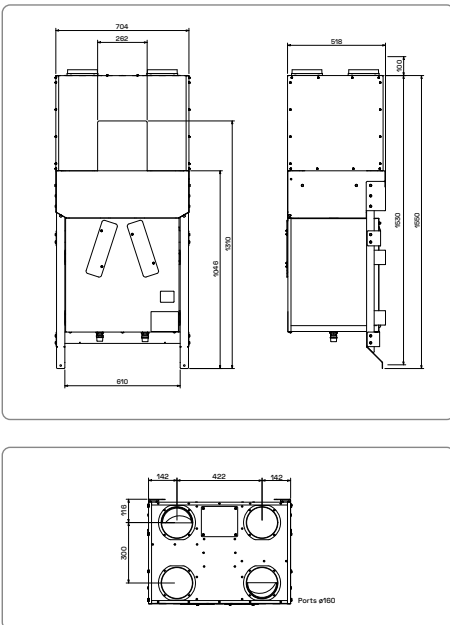
**TP758 -**  
Floor mounted unit

**TP761 -**  
Floor washing machine  
mounted unit

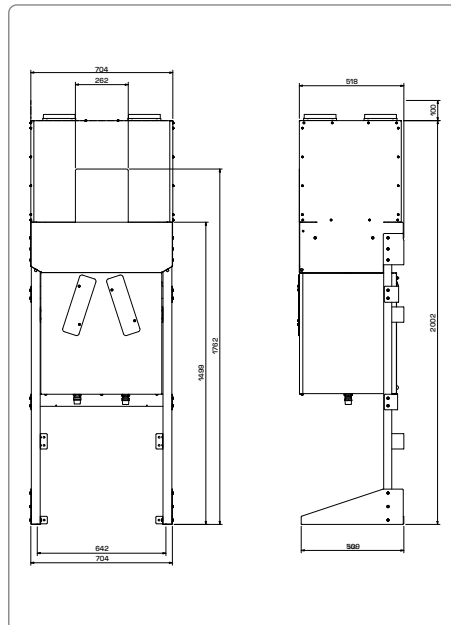


## Drawings & Dimensions

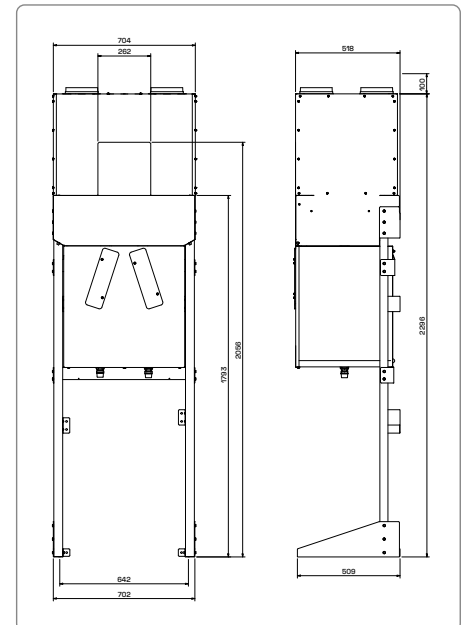
Wall Mounted Unit



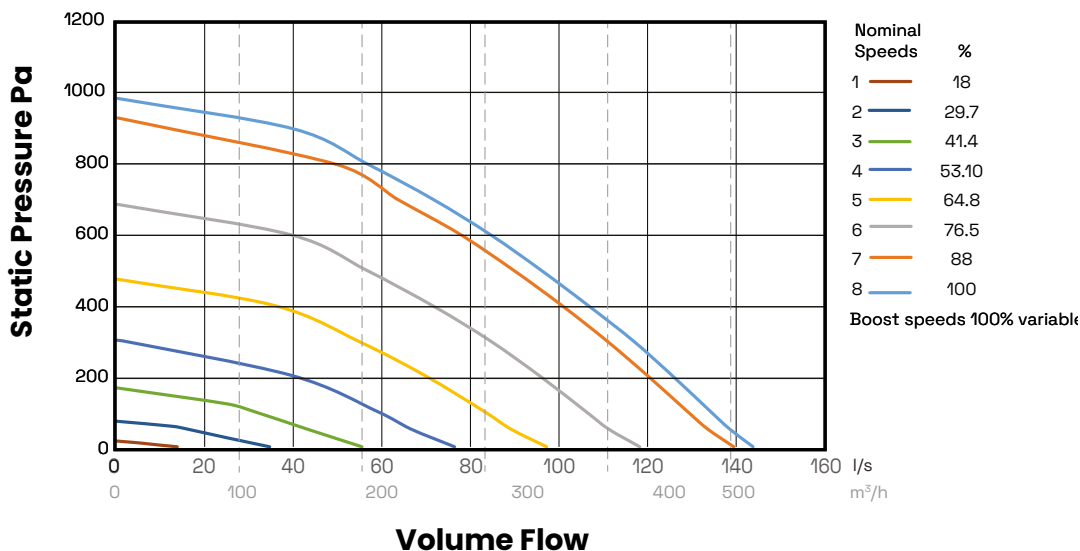
Floor Standing Unit



Floor Standing Washing Machine Unit

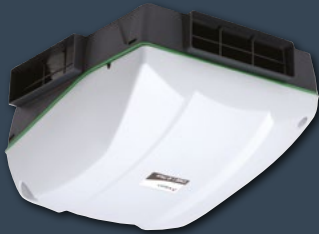


## Performance





## CM2.1 Q Plus (MEV)



**Dimensions**  
355x421x252

**Specific Fan Power:**  
down to 0.18 W/l/s

**Airflow:**  
123l/s @ 100 Pa

**Ports:**  
204x60 or  
110x54mm (converter)

**Weight:**  
5kg

**Finish:**  
Light grey / dark grey

**Warranty:**  
3 years

**Product Codes:**  
First fix  
TP325 - CME base only

**Volt free switch inputs**

Full assembly  
TP312A  
TP312HA - humidity  
sensor

Second fix  
TP313A  
TP313HA - humidity  
sensor

**Switch live inputs**

Full assembly  
TP312HALS - humidity  
sensor, switch live  
inputs

Second fix  
TP313HALS - humidity  
sensor, switch live  
inputs

## CM3.1 Q Plus (MEV)



**Dimensions**  
310x340x252mm

**Specific Fan Power:**  
down to 0.16 W/l/s

**Airflow:**  
128l/s @ 100 Pa

**Ports:**  
Ø125 and/or Ø100

**Weight:**  
5kg

**Finish:**  
Light grey / dark grey

**Warranty:**  
3 years

**Product Codes:**

**Volt free switch inputs**  
Full assembly  
TP342A  
TP342HA - humidity  
sensor

**Switch live inputs**

Full assembly  
TP342HALS - humidity  
sensor, switch live  
inputs

## Titon Ultimate® (dMEV)



**Dimensions**  
Ø195mm with 45mm  
projection

**Specific Fan Power:**  
down to 0.11 W/l/s

**Airflow:**  
up to 30 l/s

**Port:**  
100Ø

**Weight:**  
0.5kg

**Finish:**  
ABS, PCB's, LED display  
& brushless motor  
  
SELV option available

**Warranty:**  
18 months

**Product Codes:**  
TP640i – Basic version  
TP640Hi – Humidity  
Control  
TP640HDi – Humidity  
Control with Data  
Logging

## Trimbox NO<sub>2</sub> Filter®



**Dimensions**  
350x690x205

**Port Dimension**  
220x90, Ø150, Ø160

**Finish:**  
White paint

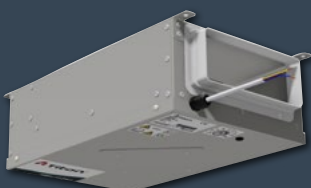
**Weight:**  
Unit 1 (x3) - 17 Kg  
Unit 2 (x4) - 20 Kg  
Insulation Jacket -  
2.8 Kg

**Filter:**  
Active Carbon Filter

**Product Codes:**  
Unit One (3 Filters):  
TP550 - 220 x 90,  
TP552 - Ø160,  
TP554 - Ø150

Unit Two (4 Filters):  
TP551 - 220 x 90  
TP553 - Ø160  
TP555 - Ø150

## Purge Ventilation



**Dimensions**  
510x300x150

**Airflow:**  
up to 161 l/s

**Weight:**  
7.2kg

**Port:**  
220x90 and Ø150mm or  
220x90mm with adaptor  
for 90° option

**Finish:**  
Natural Zintec

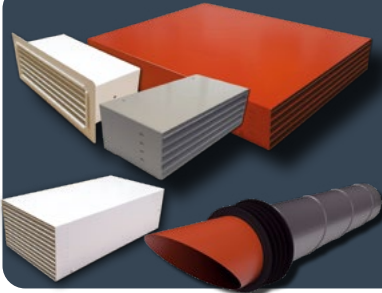
**Warranty:**  
2 years

**Product Codes:**  
TP625 - Purge Unit  
TP629 - Ø150 Back Draft  
Damper

TP630 - Powered  
Damper Actuator  
TP631 - Ceiling Cover Kit  
(Ø150 only)  
TP502 - Boost Switch  
(latching)



## A1-Rated Titon FireSafe® Range

**Dimensions**

204x60x100/400  
330x60x400/500  
204x128x100/400/500  
Ø100 and 630mm

**Accessories**

Metal 45° Bend 204x60  
Metal 45° Bend 330x60

**Transition**

330x60 to 220x90  
204x128 to 220x90

**Metal Sleeve**

204x60x200  
220x90x400

Bespoke sizes and colours available, please enquire.

Polyester Powder Coating (EN13501-1 classification A2-s1,d0)

Complies with the latest standards as set out in Approved Document B (fire safety) volume 1: Dwellings and The Building Safety Act.

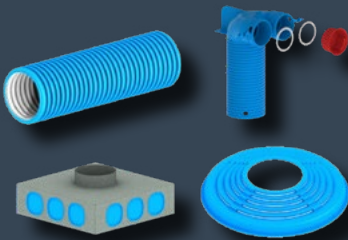
**Material:**

Steel Electrolytically Zinc Coated (BS EN 10152 DC01 ZE25/25)

**Standard Finishes:** Terracotta, Sand, Grey, White or Brown



## Semi-Rigid Ducting



**Available in sizes (mm):** Ø75mm and Ø92mm

**Flexible Yet Strong:**

Semi-Rigid Ducting offers a balance of flexibility and durability, making it perfect for

installations requiring bends or complex routing.

**Compact and Space Saving:**

Its flexibility allows it to be used in tight spaces

or complex ducting layouts, ensuring consistent airflow without compromising on installation space.

**Quick Installation:**

Designed for ease of

fitting and reducing the need for additional connectors, Semi-Rigid Ducting can speed up installation times and reduce labour costs.

## Thermal Ducting Self-Seal Ducting



**Available in sizes (mm):** Ø125, Ø160, 204x60 and 220x90.

**Temperature Control:**

Self-Seal Thermal Ducting includes integrated insulation,

helping to prevent heat loss or gain as air travels through the system. This maintains a stable temperature and improves energy efficiency.

**Enhanced Sealing:**

The self-sealing feature simplifies installation and ensures a secure fit, reducing the risk of leakage and maintaining system integrity.

**Condensation Prevention:**

By regulating temperature changes within the ducting, Thermal Ducting minimises condensation.

## Rigid Ducting



**Available in a variety of sizes (mm):**

Ø100, Ø125, Ø150, Ø160, 110x54, 204x60, and 220x90.

**Durable and Reliable:**

Made from high-quality materials, Rigid Ducting is ideal for permanent installations requiring robust airflow with minimal maintenance.

**Versatile Applications:**

Suitable for residential, commercial, and industrial settings, ensuring consistent performance across varying duct lengths.

**Improved Efficiency:**

Rigid Ducting reduces air resistance and minimises potential air leakage, supporting energy-efficient ventilation.

## Sonair 3 – Supply Ventilation



- Ventilates and filters the air
- Independently tested for acoustic performance
- Exceptional sound attenuation (up to 58dB)

- Air cleaning
- Low energy

Sonair 3 provides mechanical input ventilation when switched on, when

switched off provides background trickle ventilation which includes a controllable shutter.

It is designed with sound attenuating features to reduce noise transferring from

outside to inside the home

Sonair 3 is a wall mounted input fan featuring a detachable remote control with an LED speed indicator.



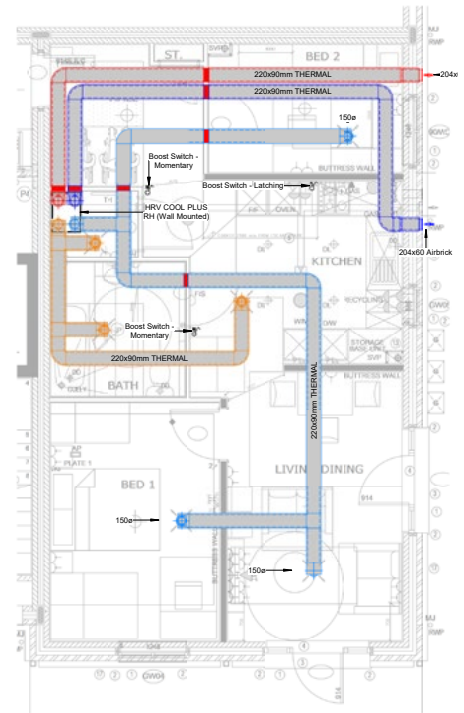
## Assisting with designs and support

Achieving an **efficient, reliable, and high-performance ventilation system** requires careful planning, precise calculations, and expert knowledge.

With Titon’s **complimentary** Design Service, we offer comprehensive support from concept to completion, ensuring that your ventilation system meets regulatory standards, best practices, and performance expectations. Our **in-house experts** collaborate with architects, contractors, and developers to create tailored ventilation solutions that address the unique needs of each project

## Trust Titon for High Performance Design

Choosing Titon’s Design Service means investing in a professional, collaborative approach to ventilation design that enhances building performance and occupant comfort. Our focus on regulatory compliance, energy efficiency, and tailored solutions ensures that every system meets the highest standards in the industry. From initial consultation to final installation, Titon is with you every step of the way to ensure a seamless and successful project outcome.



## Putting our people and planet first

At Titon, we deliver products and services in a manner that is not detrimental to the environment or the health and safety of our staff, customers, or the general public.

Our systems are designed to balance sustainability with performance, reducing energy consumption while maintaining fresh, pollutant-free indoor air—an essential part of the UK’s drive toward net zero.

In line with our commitment to sustainability and best environmental practices, we are proudly ISO14001-certified, demonstrating the minimised impact our operations have on the environment and our ongoing improvement to environmental management.

## Titon Hardware Carbon Reduction Plan to 2050

Titon are taking bold steps toward a cleaner future. Our 2023/24 baseline emissions were 1,219 tCO<sub>2</sub>e, and we’re aiming to cut emissions intensity by 15% by 2030 on the path to Net Zero by 2050. To get there, we’re switching to electric vehicles, harnessing solar energy, and phasing out natural gas. Our plan follows the GHG Reporting Protocol and is backed by a Commitment Statement signed by our CEO a clear promise to act for people and planet.





## Titon: The indoor air quality experts

At Titon, we believe everyone deserves to breathe cleaner, healthier air. With decades of expertise in designing and manufacturing advanced ventilation solutions, we are passionate about creating systems that improve indoor air quality, enhance comfort, and contribute to healthier living and working environments.

From highly efficient MVHR systems ideal for airtight, energy-efficient homes to MEV solutions and extract fans suited to medium-density buildings or retrofit projects, Titon provides the versatility and performance you need for every development type.

Our commitment to quality and reliability is demonstrated through our ISO and SAP certifications, and we are dedicated to supplier excellence. Combining rigorous product testing with outstanding service ensures that our every solution exceeds expectations.

As a trusted end-to-end partner, we support your project from start to finish. Whether it's helping you select the right system, providing tailored design advice, coordinating on-site support, or offering maintenance and after-care resources, we ensure your ventilation systems perform seamlessly at every stage.

Titon Hardware Ltd.  
894 The Crescent  
Colchester  
CO4 9YQ  
United Kingdom

[www.titon.com](http://www.titon.com)

